



WHEELED EXCAVATOR **WX210 - Series 2**



Engine Horsepower	129 kW - 173 hp
Max Operating weight	22000 kg
Bucket	0.45 m ³ to 1.25 m ³

MAINTENANCE CENTRE

Case WX series wheeled excavators are powered by the latest Family III Case diesel engines. Extended 500 hour service intervals are standard across the range, providing minimal downtime and maximum productivity. A purpose designed catwalk provides easy access to all service and diagnostic points. Ecological oil drain plugs cut the risk of ground contamination during regular service and repair.

Service access. Reduced downtime.



COMFORT CAB

The WX210 has outstanding visibility all around the machine, thanks to a large glazed area and transparent roof panel. An air suspension seat and tilting steering column ensure that operators of all sizes can find a comfortable operating position, reducing fatigue and increasing productivity throughout the day. A direction control switch on the joystick, along with automatic brakes and front axle lock, reduce operator effort. The Case Digipower management and fine grading mode, in combination with dozer blade and stabiliser fine controls on the joystick, allow the operator total control of the machine in all applications.

Increased control. Reduced fatigue.

POWER TO PERFORM

With a compact upperstructure and well balanced design, the WX machines offer high lifting and digging performance. Fully independent dozer blade and stabiliser control, and mechanically lockable stabiliser pads, give the machine a solid working platform. High engine output with Power Boost function ensures total productivity. PowerShift transmission provides optional travel speeds of 30 km/h with gear shifting on the move, yet retains best in class tractive effort for dozing. Quick coupler compatible with previous generation machines and quick connectors on auxiliary hydraulics increase machine versatility and operator acceptance.

Stable platform. All round productivity.



SAFE DESIGN

Case inching and extra slow speed setting and road travel mode with swing and attachment cut-out, ensure safe operation in all site conditions. Automatic battery cut-off and engine warm-up system reduce the risk of damage to the engine and hydraulic system at start-up. Audible and visual warnings for the axle lock assist the operator, while a large stabiliser foot print provides total stability on rough ground.

Stable base. Maximum performance.

ENGINE



The WX210 uses a six cylinder Case engine for maximum torque and smooth power. This EU Tier III compliant engine is turbocharged and intercooled for optimised clean combustion and high power output. The engine has been designed for maximum reliability and durability, with an auto warm-up feature ensuring long service life and reduced downtime.

UNDERCARRIAGE



The WX has a two speed transmission providing an optional maximum travel speed between job sites of 30 km/h. Ground clearance can be increased with the option of a two-piece drive shaft, offering improved off-road capability for maximum versatility on site. As with all Case WX machines the WX210 has the Case inching control, allowing the operator to gradually move the machine for safe and accurate positioning. The machine is available with a choice of wheel configurations, allowing customers to tailor the layout to meet their individual application.

VISIBILITY



Large glass area with two-piece full height windscreen offers class leading levels of visibility all around the machine. The operator has a clear view to the work area when digging and loading, and to the road ahead when driving the machine between job sites. A low engine canopy to the rear of the excavator ensures maximum manoeuvrability on confined sites.

OPERATOR'S CAB

Spacious operator cab with ergonomic design has large tinted glass area for class-leading all round visibility, ensuring safe operation on site. A large roof window with standard shade, fully adjustable suspension seat, optional air conditioning, adjustable tilt steering column and exceptionally low internal noise and vibration levels provide the operator with ideal working conditions, reducing fatigue and boosting productivity.

The comprehensive LCD display provides a clear readout of all operating information and diagnostic functions, along with an integrated working mode display. Auxiliary operating controls, including travel direction, attachment and blade/stabiliser selection, levelling mode and power boost function are integrated into the joystick levers, reducing operator effort and ensuring total control of the machine.



HYDRAULICS



The WX210 features a well laid out, easy to maintain hydraulic control valve. The Case Digipower hydraulic control system monitors the main pumps and regulates engine power to meet the needs of the operator. All WX machines offer a range of selectable power levels, or working modes, for specific digging and lifting tasks. These include a levelling mode for fine grading and lifting work. PowerBoost is standard in the lifting modes and works for 8 seconds in all other modes according to operator demand.

STABILIZERS



With the modular design of the Case WX chassis, customers can choose between stabilisers, a dozer blade or a combination of the two. The stabilisers and dozer blade are independently controlled, to allow for machine levelling on rough ground.

ACCESSIBILITY



The machine retains the Case access catwalk behind the cab. The service engineer has unparalleled access to all regular service and maintenance points and a safe area in which to work. The top of the engine, the hydraulic valves and the cooling pack are easily accessible through the large lift up canopy.



SPECIFICATIONS

ENGINE

Make _____ CASE - Family III
 Model _____ 667TA/MEE
 Type _____ 6 cyl. turbo charged, direct injection, intercooler
 Displacement _____ 6.7 l
 Bore x stroke _____ 104 x 132 mm
 Output power (ISO 14396) _____ 129 kW/173 hp
 Rated speed _____ 2000 rpm

HYDRAULIC SYSTEM

Main pumps _____ 3 variable displacement, axial piston
 Total maximum flow _____ 2 x 206 lpm + 108 lpm
 Attachment maximum pressure/PowerBoost 350/370 bar
 Travel maximum pressure _____ 370 bar
 Swing maximum pressure _____ 390 bar

SWING

Swing speed _____ 9.7 rpm
 Swing torque _____ 58 kNm
 Tail swing radius _____ 2.75 m

TRAVEL

Maximum travel speed (field range) _____ 8 km/h
 Maximum travel speed (road range) _____ 20 or 30 km/h
 Maximum drawbar pull (field range) _____ 130 kN

ELECTRICAL SYSTEM

Voltage _____ 24 V
 Batteries _____ 2 x 12 V - 100 Ah
 Alternator _____ 70 A
 Automatic isolator switch and 12 V power supply in cab as standard.

CIRCUIT AND COMPONENT CAPACITIES

Engine oil _____ 16 l
 Cooling circuit _____ 29 l
 Fuel tank _____ 325 l
 Hydraulic tank _____ 160 l
 Swing gear _____ 4 l

TYRES

4 wheels _____ 18 - 22.5 XF
 8 wheels with twinning rings _____ 10.00 - 20
 _____ 11.00-20
 _____ 600/40 - 22.5

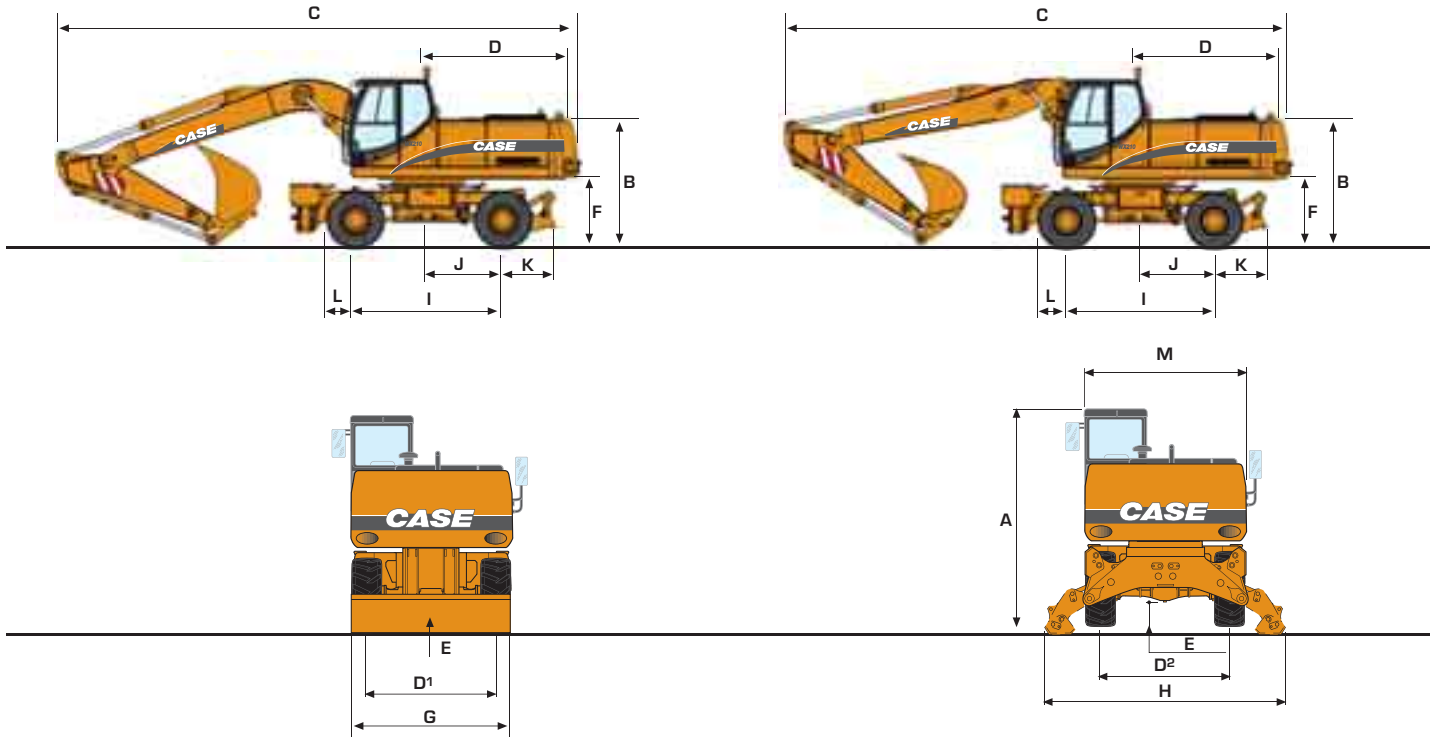
SHIPPING DIMENSIONS AND WEIGHT

	PL			P2A			P2AL			P4A		
	Rear Blade			Rear Stabilisers			Front Blade + Rear Stab.			4 Stabilisers		
	max length mm	max height mm	kg	max length mm	max height mm	kg	max length mm	max height mm	kg	max length mm	max height mm	kg
MONOBOOM												
Dipper 2.30 m	9685	3219	19600	9685	3219	20000	9585	3219	20700	9685	3219	21250
Dipper 2.60 m	9675	3197	19700	9675	3197	20100	9675	3197	20800	9575	3197	21350
Dipper 2.90 m	9675	3279	19800	9675	3279	20200	9675	3279	20900	9675	3279	21450

	PL			P2A			P2AL			P4A		
	Rear Blade			Rear Stabilisers			Front Blade + Rear Stab.			4 Stabilisers		
	max length mm	max height mm	kg	max length mm	max height mm	kg	max length mm	max height mm	kg	max length mm	max height mm	kg
ARTICULATED BOOM												
Dipper 2.30 m	9434	3151	20250	9434	3151	20700	9434	3151	21300	9434	3151	21800
Dipper 2.60 m	9434	3155	20350	9434	3155	20800	9434	3155	21400	9434	3155	21900
Dipper 2.90 m	9415	3221	20450	9415	3221	20900	9415	3221	21500	9415	3221	22000

Weights are indicated fitted with a 800 kg bucket

GENERAL DIMENSIONS



			MONOBOOM	ARTICULATED BOOM
A	Overall height (with attachment)	m	3.15	3.15
B	Height of machine	m	2.42	2.42
C	Overall length	m	9.68	9.43
D	Swing tail radius	m	2.75	2.75
D¹	Gauge with 4 wheels	m	1.89	1.89
D²	Gauge with 8 wheels	m	1.91	1.91
E	Ground clearance of undercarriage	m	0.37	0.37
F	Ground clearance of uppercarriage	m	1.30	1.30
G	Width unit blade/stabilizers	m	2.53/2.54	2.53/2.54
H	Width over stabs (max height)	m	3.73	3.73
I	Wheel base	m	2.75	2.75
J	Dimension rear axle to center		1.37	1.37
K	Undercarriage rear			
L	Rear blade	m	1.05	1.05
M	Undercarriage front end	m	0.60	0.60
	Width of uppercarriage	m	2.50	2.50

Tires type 600/40 - 22,5 I-331 Alliance
Available with 2.75 m wide axles also.

BUCKETS

GENERAL PURPOSE

SAE capacity	l	450	600	760	840	920	1090	1250	1420
Width	mm	600	750	900	1000	1100	1200	1350	1500
Weight	kg	524	578	645	682	731	767	849	905

HEAVY DUTY

SAE capacity	l	450	600	760	840	920	1090	1250	1420
Width	mm	600	750	900	1000	1100	1200	1350	1500
Weight	kg	580	634	710	747	783	841	911	988

ROCK BUCKET

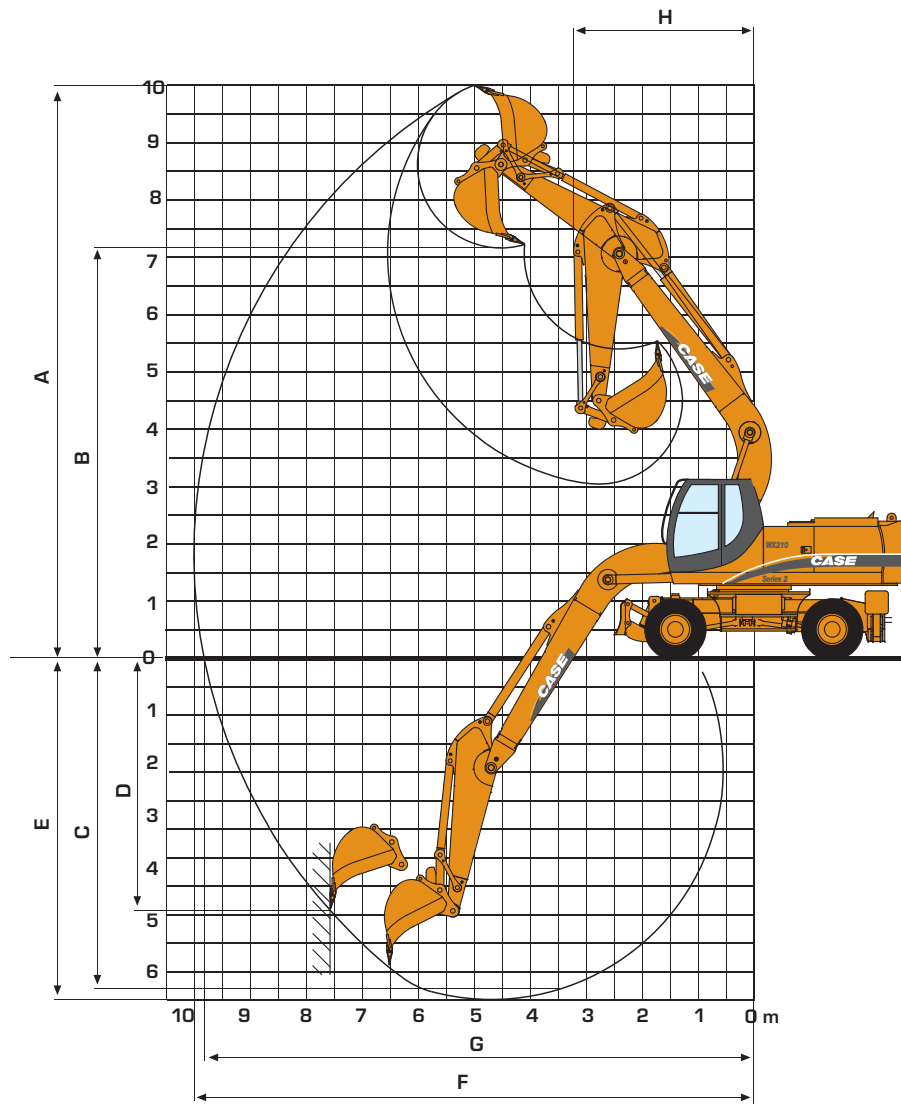
SAE capacity	l	450	600	760	840	920	1090	1250
Width	mm	600	750	900	1000	1100	1200	1350
Weight	kg	601	655	730	766	802	858	928

DITCH CLEANING

SAE capacity	l	860	940
Width	mm	1830	2130
Weight	kg	645	710

* For other bucket sizes, please contact your CASE dealer

PERFORMANCE DATA



	DIPPERSTICK	MONO BOOM 5.60 m			ARTICULATED BOOM 5.40 m		
		2.30 m	2.60 m	2.90 m	2.30 m	2.60 m	2.90 m
A	Max. digging height	m	10.0	10.0	10.1	10.1	10.4
B	Max. loading height	m	7.2	7.2	7.4	7.3	7.6
C	Max. digging depth	m	5.6	5.9	6.2	5.7	6.3
D	Max. vert. wall digging depth	m	3.7	3.5	3.8	3.8	4.1
E	Max. depth of cut for B' level bottom	m	5.4	5.7	6.1	5.6	6.2
F	Max. digging reach	m	9.5	9.8	10.0	9.4	9.6
G	Max. digging reach at ground level	m	9.4	9.6	9.9	9.2	9.4
H	Min. front swing radius	m	3.3	3.2	3.2	3.2	3.1
	Bucket breakout force (370 bar) SAE	kN	145.4	145.4	145.4	145.4	145.4
	Stick crowd force (370 bar) SAE	kN	121.4	111.9	103.9	121.4	103.9

LIFTING CAPACITY

MONO BOOM

Values are expressed in tons

 Front  90°	REACH									
	3.0 m		4.5 m		6.0 m		7.5 m		At max reach	

2.30 m dipper, counterweight 3.8 t, weight of Quick Coupler 365 kg

7.5 m	Rear dozer up					5.0*	3.1			4.3*	3.0	6.2
	Rear dozer down					5.0*	3.5			4.3*	3.4	6.2
	2 set stabs down					5.0*	4.3			4.3*	4.1	6.2
	Dozer and stabs down					5.0*	5.0*			4.3*	4.3*	6.2
6.0 m	Rear dozer up					5.0	3.2			3.4	2.1	7.3
	Rear dozer down					5.6*	3.6			3.9*	2.4	7.3
	2 set stabs down					5.6*	4.3			3.9*	3.0	7.3
	Dozer and stabs down					5.6*	5.6*			3.9*	3.9*	7.3
4.5 m	Rear dozer up			7.5*	4.8	4.8	3.0	3.3	2.0	2.9	1.7	8.0
	Rear dozer down			7.5*	5.4	6.2*	3.4	5.6*	2.3	3.8*	2.0	8.0
	2 set stabs down			7.5*	6.7	6.2*	4.1	5.6*	2.8	3.8*	2.4	8.0
	Dozer and stabs down			7.5*	7.5*	6.2*	5.5	5.6*	3.8	3.8*	3.3	8.0
3.0 m	Rear dozer up			7.1	4.2	4.5	2.7	3.2	1.9	2.6	1.5	8.4
	Rear dozer down			9.5*	4.8	7.1*	3.1	5.9	2.2	3.8*	1.7	8.4
	2 set stabs down			9.5*	6.0	7.1*	3.9	5.9	2.7	3.8*	2.2	8.4
	Dozer and stabs down			9.5*	8.2	7.1*	5.2	5.9*	3.6	3.8*	3.0	8.4
1.5 m	Rear dozer up			6.5	3.7	4.3	2.5	3.0	1.7	2.5	1.4	8.5
	Rear dozer down			11.2*	4.3	7.9*	2.9	5.7	2.0	4.1*	1.6	8.5
	2 set stabs down			11.2*	5.4	7.9*	3.6	5.7	2.6	4.1*	2.1	8.5
	Dozer and stabs down			11.2*	7.6	7.9*	4.9	6.1	3.5	4.1*	2.9	8.5
0.0 m	Rear dozer up			6.2	3.5	4.1	2.3	2.9	1.7	2.5	1.4	8.3
	Rear dozer down			11.6*	4.1	8.1	2.7	5.6	1.9	4.6*	1.7	8.3
	2 set stabs down			11.6*	5.2	8.1	3.4	5.6	2.5	4.6*	2.1	8.3
	Dozer and stabs down			11.6*	7.3	8.3*	4.7	6.0	3.4	4.6*	2.9	8.3
-1.5 m	Rear dozer up	8.5*	6.5	6.2	3.4	4.0	2.3	2.9	1.6	2.8	1.6	7.8
	Rear dozer down	8.5*	7.7	11.1*	4.0	8.0	2.6	5.6	1.9	5.3	1.8	7.8
	2 set stabs down	8.5*	8.5*	11.1*	5.1	8.0	3.4	5.6	2.4	5.3	2.3	7.8
	Dozer and stabs down	8.5*	8.5*	11.1*	7.3	8.1*	4.7	5.9	3.4	5.4*	3.2	7.8
-3.0 m	Rear dozer up	12.7	6.7	6.2	3.5	4.0	2.3			3.4	1.9	6.9
	Rear dozer down	13.4*	7.9	9.7*	4.1	7.1*	2.7			5.6*	2.2	6.9
	2 set stabs down	13.4*	10.4	9.7*	5.2	7.1*	3.4			5.6*	2.8	6.9
	Dozer and stabs down	13.4*	13.4*	9.7*	7.4	7.1*	4.7			5.6*	3.9	6.9
-4.5 m	Rear dozer up			6.5	3.7							
	Rear dozer down			6.8*	4.3							
	2 set stabs down			6.8*	5.5							
	Dozer and stabs down			6.8*	6.8*							

* Hydraulically limited

LIFTING CAPACITY

MONO BOOM

Values are expressed in tons

 Front  90°	REACH									
	3.0 m		4.5 m		6.0 m		7.5 m		At max reach	

2.60 m dipper, counterweight 3.8 t, weight of Quick Coupler 365 kg

7.5 m	Rear dozer up					4.8*	3.2			3.6*	2.8	6.4
	Rear dozer down					4.8*	3.6			3.6*	3.1	6.4
	2 set stabs down					4.8*	4.4			3.6*	3.6*	6.4
	Dozer and stabs down					4.8*	4.8*			3.6*	3.6*	6.4
6.0 m	Rear dozer up					5.0	3.2	3.3	2.0	3.3	2.0	7.6
	Rear dozer down					5.3*	3.6	3.6*	2.3	3.3*	2.3	7.6
	2 set stabs down					5.3*	4.4	3.6*	2.9	3.3*	2.8	7.6
	Dozer and stabs down					5.3*	5.3*	3.6*	3.6*	3.3*	3.3*	7.6
4.5 m	Rear dozer up			7.0*	4.9	4.8	3.0	3.3	2.0	2.7	1.6	8.3
	Rear dozer down			7.0*	5.5	5.9*	3.4	5.3*	2.3	3.3*	1.9	8.3
	2 set stabs down			7.0*	6.7	5.9*	4.2	5.3*	2.8	3.3*	2.3	8.3
	Dozer and stabs down			7.0*	7.0*	5.9*	5.5	5.3*	3.8	3.3*	3.2	8.3
3.0 m	Rear dozer up			7.1	4.3	4.5	2.8	3.2	1.9	2.5	1.4	8.6
	Rear dozer down			9.0*	4.9	6.8*	3.1	5.7*	2.1	3.4*	1.6	8.6
	2 set stabs down			9.0*	6.1	6.8*	3.9	5.7*	2.7	3.4*	2.1	8.6
	Dozer and stabs down			9.0*	8.3	6.8*	5.2	5.7*	3.6	3.4*	2.9	8.6
1.5 m	Rear dozer up			6.5	3.7	4.3	2.5	3.0	1.7	2.4	1.3	8.7
	Rear dozer down			10.8*	4.3	7.7*	2.9	5.7	2.0	3.6*	1.5	8.7
	2 set stabs down			10.8*	5.5	7.7*	3.6	5.7	2.5	3.6*	2.0	8.7
	Dozer and stabs down			10.8*	7.7	7.7*	4.9	6.1	3.5	3.6*	2.7	8.7
0.0 m	Rear dozer up			6.2	3.4	4.0	2.3	2.9	1.6	2.4	1.3	8.5
	Rear dozer down			11.5*	4.0	8.1	2.7	5.6	1.9	4.1*	1.6	8.5
	2 set stabs down			11.5*	5.2	8.1	3.4	5.6	2.4	4.1*	2.0	8.5
	Dozer and stabs down			11.5*	7.3	8.2*	4.7	5.9	3.4	4.1*	2.8	8.5
-1.5 m	Rear dozer up	8.9*	6.3	6.1	3.4	3.9	2.2	2.8	1.6	2.6	1.4	8.0
	Rear dozer down	8.9*	7.5	11.2*	3.9	7.9	2.6	5.5	1.9	4.9*	1.7	8.0
	2 set stabs down	8.9*	8.9*	11.2*	5.1	8.0	3.3	5.5	2.4	4.9*	2.2	8.0
	Dozer and stabs down	8.9*	8.9*	11.2*	7.2	8.1*	4.6	5.9	3.3	4.9*	3.0	8.0
-3.0 m	Rear dozer up	12.6	6.5	6.2	3.4	4.0	2.2			3.1	1.7	7.1
	Rear dozer down	14.2*	7.7	10.0*	4.0	7.3*	2.6			5.6*	2.0	7.1
	2 set stabs down	14.2*	10.2	10.0*	5.1	7.3*	3.3			5.6*	2.6	7.1
	Dozer and stabs down	14.2*	14.2*	10.0*	7.3	7.3*	4.6			5.6*	3.6	7.0
-4.5 m	Rear dozer up			6.4	3.6					4.4	2.6	5.8
	Rear dozer down			7.5*	4.2					5.3*	3.0	5.8
	2 set stabs down			7.5*	5.3					5.3*	3.7	5.8
	Dozer and stabs down			7.5*	7.5*					5.3*	5.2	5.8

* Hydraulically limited

LIFTING CAPACITY

MONO BOOM

Values are expressed in tons

Front 90°	REACH									
	3.0 m		4.5 m		6.0 m		7.5 m		At max reach	

2.90 m dipper, counterweight 3.8 t, weight of Quick Coupler 365 kg

9.0 m	Rear dozer up									3,8*	3,8*	5.1
	Rear dozer down									3,8*	3,8*	5.1
	2 set stabs down									3,8*	3,8*	5.1
	Dozer and stabs down									3,8*	3,8*	5.1
7.5 m	Rear dozer up					4,7*	3,3			3,1*	2,5	6.8
	Rear dozer down					4,7*	3,7			3,1*	2,8	6.8
	2 set stabs down					4,7*	4,4			3,1*	3,1*	6.8
	Dozer and stabs down					4,7*	4,7*			3,1*	3,1*	6.8
6.0 m	Rear dozer up					4,9*	3,2	3,4	2,1	2,9*	1,8	7.9
	Rear dozer down					4,9*	3,6	4,1*	2,3	2,9*	2,1	7.9
	2 set stabs down					4,9*	4,4	4,1*	2,9	2,9*	2,6	7.9
	Dozer and stabs down					4,9*	4,9*	4,1*	3,9	2,9*	2,9*	7.9
4.5 m	Rear dozer up			6,4*	5,0	4,9	3,0	3,3	2,0	2,6	1,5	8.5
	Rear dozer down			6,4*	5,6	5,5*	3,4	5,1*	2,3	2,9*	1,7	8.5
	2 set stabs down			6,4*	6,4*	5,5*	4,2	5,1*	2,8	2,9*	2,2	8.5
	Dozer and stabs down			6,4*	6,4*	5,5*	5,5*	5,1*	3,8	2,9*	2,9*	8.5
3.0 m	Rear dozer up			7,2	4,4	4,6	2,8	3,2	1,9	2,3	1,3	8.9
	Rear dozer down			8,5*	5,0	6,5*	3,2	5,5*	2,1	2,9*	1,5	8.9
	2 set stabs down			8,5*	6,2	6,5*	3,9	5,5*	2,7	2,9*	1,9	8.9
	Dozer and stabs down			8,5*	8,4	6,5*	5,3	5,5*	3,6	2,9*	2,7	8.9
1.5 m	Rear dozer up			6,6	3,8	4,3	2,5	3,0	1,7	2,2	1,2	9.0
	Rear dozer down			10,5*	4,4	7,4*	2,9	5,7	2,0	3,2*	1,4	9.0
	2 set stabs down			10,5*	5,5	7,4*	3,6	5,7	2,5	3,2*	1,8	9.0
	Dozer and stabs down			10,5*	7,7	7,4*	4,9	5,9*	3,5	3,2*	2,6	9.0
0.0 m	Rear dozer up	5,0*	5,0*	6,2	3,4	4,0	2,3	2,9	1,6	2,2	1,2	8.8
	Rear dozer down	5,0*	5,0*	11,4*	4,0	8,0*	2,7	5,5	1,9	3,5*	1,4	8.8
	2 set stabs down	5,0*	5,0*	11,4*	5,2	8,0*	3,4	5,6	2,4	3,5*	1,9	8.8
	Dozer and stabs down	5,0*	5,0*	11,4*	7,3	8,0*	4,7	5,9	3,3	3,5*	2,6	8.8
-1.5 m	Rear dozer up	8,5*	6,2	6,0	3,3	3,9	2,2	2,8	1,5	2,4	1,3	8.3
	Rear dozer down	8,5*	7,4	11,3*	3,9	7,9	2,5	5,5	1,8	4,2*	1,6	8.3
	2 set stabs down	8,5*	8,5*	11,3*	5,0	7,9	3,3	5,5	2,3	4,2*	2,0	8.3
	Dozer and stabs down	8,5*	8,5*	11,3*	7,2	8,1*	4,6	5,8	3,3	4,2*	2,8	8.3
-3.0 m	Rear dozer up	12,4	6,4	6,1	3,3	3,9	2,2			2,8	1,6	7.5
	Rear dozer down	13,3*	7,6	10,3*	3,9	7,5*	2,5			5,4*	1,9	7.5
	2 set stabs down	13,3*	10,0	10,3*	5,0	7,5*	3,3			5,4*	2,4	7.5
	Dozer and stabs down	13,3*	13,3*	10,3*	7,2	7,5*	4,6			5,4*	3,3	7.5
-4.5 m	Rear dozer up	11,4*	6,7	6,3	3,5	4,1	2,3			3,9	2,2	6.2
	Rear dozer down	11,4*	7,9	8,1*	4,1	5,6*	2,7			5,2*	2,6	6.2
	2 set stabs down	11,4*	10,4	8,1*	5,2	5,6*	3,4			5,2*	3,3	6.2
	Dozer and stabs down	11,4*	11,4*	8,1*	7,4	5,6*	4,7			5,2*	4,6	6.2

* Hydraulically limited





CASE

W762HD

30

CASE

LIFTING CAPACITY

ARTICULATED BOOM

Values are expressed in tons

Front 90°	REACH									
	3.0 m		4.5 m		6.0 m		7.5 m		At max reach	

2.30 m dipper, counterweight 3.8 t, weight of Quick Coupler 365 kg

7.5 m	Rear dozer up									4.5*	3.2	5.9
	Rear dozer down									4.5*	3.7	5.9
	2 set stabs down									4.5*	4.5*	5.9
	Dozer and stabs down									4.5*	4.5*	5.9
6.0 m	Rear dozer up			5.8*	5.4	5.1	3.4			3.7	2.3	7.1
	Rear dozer down			5.8*	5.8*	5.3*	3.8			4.0*	2.6	7.1
	2 set stabs down			5.8*	5.8*	5.3*	4.5			4.0*	3.2	7.1
	Dozer and stabs down			5.8*	5.8*	5.3*	5.3*			4.0*	4.0*	7.1
4.5 m	Rear dozer up			7.0*	5.2	5.0	3.3	3.4	2.1	3.0	1.8	7.9
	Rear dozer down			7.0*	5.8	5.7*	3.8	4.9*	2.3	3.8*	2.1	7.9
	2 set stabs down			7.0*	6.9	5.7*	4.5	4.9*	2.9	3.8*	2.6	7.9
	Dozer and stabs down			7.0*	7.0*	5.7*	5.7	4.9*	3.9	3.8*	3.5	7.9
3.0 m	Rear dozer up	9.3*	9.0	7.6	4.9	5.0	3.3	3.4	2.0	2.7	1.6	8.2
	Rear dozer down	9.3*	9.3*	8.6*	5.6	6.4*	3.7	5.5*	2.3	3.8*	1.8	8.2
	2 set stabs down	9.3*	9.3*	8.6*	6.6	6.4*	4.4	5.5*	2.9	3.8*	2.3	8.2
	Dozer and stabs down	9.3*	9.3*	8.6*	8.6	6.4*	5.6	5.5*	3.9	3.8*	3.2	8.2
1.5 m	Rear dozer up	13.0*	8.8	7.5	4.9	4.9*	3.3	3.3	2.0	2.6	1.5	8.3
	Rear dozer down	13.0*	10.0	10.6*	5.4*	7.4*	3.7	6.0*	2.2	4.0*	1.7	8.3
	2 set stabs down	13.0*	12.1	10.6*	6.5	7.4*	4.4	6.0	2.8	4.0*	2.2	8.3
	Dozer and stabs down	13.0*	13.0*	10.6*	8.4	7.4*	5.6*	6.0*	3.8	4.0*-	3.0	8.3
0.0 m	Rear dozer up	14.4	8.6	7.5	4.8	4.9	3.0	3.1	1.8	2.7	1.5	8.1
	Rear dozer down	15.8*	10.0	11.6*	5.4	8.1*	3.4	5.9	2.1	4.4*	1.8	8.1
	2 set stabs down	15.8*	12.3	11.6*	6.6	8.1*	4.2	5.9	2.7	4.4*	2.2	8.1
	Dozer and stabs down	15.8*	15.8*	11.6*	8.5*	8.1*	5.6*	6.2	3.6	4.4*	3.1	8.1
-1.5 m	Rear dozer up	14.7	8.1	7.4	4.5	4.5	2.7	3.0	1.7	2.9	1.7	7.6
	Rear dozer down	19.2*	9.4	11.8*	5.1	8.4*	3.1	5.6*	2.0	5.2*	1.9	7.6
	2 set stabs down	19.2*	12.1	11.8*	6.3	8.4*	3.8	5.6*	2.5	5.2*	2.5	7.6
	Dozer and stabs down	19.2*	17.4	11.8*	8.6	8.4*	5.2	5.6*	3.5	5.2*	3.4	7.6
-3.0 m	Rear dozer up	14.4	7.9	7.0	4.1	4.3	2.5			3.6	2.1	6.7
	Rear dozer down	19.9*	9.2	12.3*	4.7	8.0*	2.9			5.9*	2.4	6.7
	2 set stabs down	19.9*	11.9	13.3*	5.9	8.0*	3.6			5.9*	3.0	6.7
	Dozer and stabs down	19.9*	17.6	12.3*	8.2	8.0*	5.0			5.9*	4.2	6.7
-4.5 m	Rear dozer up	14.0	7.6									
	Rear dozer down	16.5*	8.9									
	2 set stabs down	16.5*	11.5									
	Dozer and stabs down	16.5*	16.5*									

* Hydraulically limited

LIFTING CAPACITY

ARTICULATED BOOM

Values are expressed in tons

 Front  90°	REACH									
	3.0 m		4.5 m		6.0 m		7.5 m		At max reach	

2.60 m dipper, counterweight 3.80 t, weight of Quick Coupler 365 kg

9.0 m	Rear dozer up									4,9*	4,9*	4.2
	Rear dozer down									4,9*	4,9*	4.2
	2 set stabs down									4,9*	4,9*	4.2
	Dozer and stabs down									4,9*	4,9*	4.2
7.5 m	Rear dozer up					4,5*	3,2			3,7*	3,0	6.2
	Rear dozer down					4,5*	3,6			3,7*	3,4	6.2
	2 set stabs down					4,5*	4,4			3,7*	3,7*	6.2
	Dozer and stabs down					4,5*	4,5*			3,7*	3,7*	6.2
6.0 m	Rear dozer up					5,1*	3,4			3,4*	2,1	7.4
	Rear dozer down					5,1*	3,8			3,4*	2,4	7.4
	2 set stabs down					5,1*	4,5			3,4*	3,0	7.4
	Dozer and stabs down					5,1*	5,1*			3,4*	3,4*	7.4
4.5 m	Rear dozer up			6,5*	5,2	5,0	3,3	3,4	2,1	2,9	1,7	8.1
	Rear dozer down			6,5*	5,8	5,4*	3,7	4,8*	2,4	3,3*	2,0	8.1
	2 set stabs down			6,5*	6,5*	5,4*	4,4	4,8*	3,0	3,3*	2,5	8.1
	Dozer and stabs down			6,5*	6,5*	5,4*	5,4*	4,8*	3,9	3,3*	3,3*	8.1
3.0 m	Rear dozer up	10,6*	9,0	7,6	4,9	4,9	3,3	3,4	2,1	2,6	1,5	8.5
	Rear dozer down	10,6*	10,2	8,1*	5,5	6,2*	3,6	5,3*	2,4	3,3*	1,7	8.5
	2 set stabs down	10,6*	10,6*	8,1*	6,6	6,2*	4,4	5,3*	2,9	3,3*	2,2	8.5
	Dozer and stabs down	10,6*	10,6*	8,1*	8,1*	6,2*	5,6	5,3*	3,9	3,3*	3,0	8.5
1.5 m	Rear dozer up	13,2*	8,6	7,4	4,8	4,9	3,2	3,3	2,0	2,5	1,4	8.5
	Rear dozer down	13,2*	9,8	10,2*	5,4	7,1*	3,6	5,8*	2,3	3,5*	1,6	8.5
	2 set stabs down	13,2*	12,2	10,2*	6,5	7,1*	4,3	5,8*	2,8	3,5*	2,1	8.5
	Dozer and stabs down	13,2*	13,2*	10,2*	8,4	7,1*	5,5	5,8*	3,8*	3,5*	2,9	8.5
0.0 m	Rear dozer up	14,3	8,7	7,5	4,8	4,9	3,1	3,1	1,8	2,5	1,4	8.3
	Rear dozer down	15,7*	9,9	11,5*	5,4	8,0*	3,5	5,9	2,1	3,9*	1,6	8.3
	2 set stabs down	15,7*	12,3*	11,5*	6,5	8,0*	4,3	5,9	2,7	3,9*	2,1	8.3
	Dozer and stabs down	15,7*	15,7*	11,5*	8,4	8,0*	5,6	6,2	3,6	3,9*	2,9	8.3
-1.5 m	Rear dozer up	14,7	8,1	7,4	4,5	4,5	2,7	3,0	1,7	2,8	1,5	7.8
	Rear dozer down	18,7*	9,4	1,6*	5,1	8,3*	3,1	5,7	2,0	4,6*	1,8	7.8
	2 set stabs down	18,7*	12,1	11,6*	6,3	8,3*	3,9	5,7	2,5	4,6*	2,3	7.8
	Dozer and stabs down	18,7*	17,2	11,6*	8,6	8,3*	5,3	6,1	3,5	4,6*	3,2	7.8
-3.0 m	Rear dozer up	14,4	7,9	7,0	4,1	4,3	2,5			3,3	1,9	7.0
	Rear dozer down	19,6*	9,2	12,0*	4,8	8,3*	2,9			5,8*	2,2	7.0
	2 set stabs down	19,6*	11,8	12,0*	6,0	8,3*	3,6			5,8*	2,8	7.0
	Dozer and stabs down	19,6*	17,6	12,0*	8,2	8,3*	5,0			5,8*	3,9	7.0
-4.5 m	Rear dozer up	13,9	7,5	6,7	3,8							
	Rear dozer down	18,1*	8,8	9,6*	4,5							
	2 set stabs down	18,1*	11,4	9,6*	5,6							
	Dozer and stabs down	18,1*	17,0	9,6*	7,9							

* Hydraulically limited

LIFTING CAPACITY

ARTICULATED BOOM

Values are expressed in tons

Front 90°	REACH									
	3.0 m		4.5 m		6.0 m		7.5 m		At max reach	

2.90 m dipper, counterweight 3.8 t, weight of Quick Coupler 365 kg

9.0 m	Rear dozer up									4,1*	4,1*	4.8
	Rear dozer down									4,1*	4,1*	4.8
	2 set stabs down									4,1*	4,1*	4.8
	Dozer and stabs down									4,1*	4,1*	4.8
7.5 m	Rear dozer up					4,7*	3,3			3,2*	2,7	6.6
	Rear dozer down					4,7*	3,8			3,2*	3,0	6.6
	2 set stabs down					4,7*	4,5			3,2*	3,2*	6.6
	Dozer and stabs down					4,7*	4,7*			3,2*	3,2*	6.6
6.0 m	Rear dozer up					4,8*	3,4	3,4	2,1	2,9*	1,9	7.7
	Rear dozer down					4,8*	3,8	3,8	2,4	2,9*	2,2	7.7
	2 set stabs down					4,8*	4,5	3,8*	2,9	2,9*	2,8	7.7
	Dozer and stabs down					4,8*	4,8*	3,8*	3,8*	2,9*	2,9*	7.7
4.5 m	Rear dozer up			5,9*	5,2	5,0*	3,3	3,5	2,2	2,7	1,6	8.4
	Rear dozer down			5,9*	5,8	5,1*	3,7	4,7*	2,5	2,9*	1,8	8.4
	2 set stabs down			5,9*	5,9*	5,1*	4,4	4,7*	3,0	2,9*	2,3	8.4
	Dozer and stabs down			5,9*	5,9*	5,1*	5,1*	4,7*	4,0	2,9*	2,9*	8.4
3.0 m	Rear dozer up	10,0*	9,0*	7,6*	5,0	4,9	3,2	3,5	2,1	2,4	1,4	8.7
	Rear dozer down	10,0*	10,0*	7,6*	5,6	6,0*	3,6	5,1*	2,4	2,9*	1,6	8.7
	2 set stabs down	10,0*	10,0*	7,6*	6,6*	6,0*	4,3	5,1*	3,0	2,9*	2,1	8.7
	Dozer and stabs down	10,0*	10,0*	7,6*	7,6*	6,0*	5,5	5,1*	3,9	2,9*	2,8	8.7
1.5 m	Rear dozer up	13,1*	8,7	7,4	4,8	4,9	3,2	3,4	2,0	2,3	1,3	8.8
	Rear dozer down	13,1*	9,9*	9,8*	5,4*	6,8*	3,6	5,6*	2,3	3,1*	1,5	8.8
	2 set stabs down	13,1*	12,1	9,8*	6,4	6,8*	4,3	5,6*	2,9	3,1*	2,0	8.8
	Dozer and stabs down	13,1*	13,1*	9,8*	8,3	6,8*	5,4	5,6*	3,8	3,1*	2,7	8.8
0.0 m	Rear dozer up	14,2*	8,7	7,3	4,8	4,9*	3,1	3,2	1,9	2,4	1,3	8.6
	Rear dozer down	14,8*	9,9	11,2*	5,3*	7,8*	3,5	5,9*	2,2	3,4*	1,5	8.6
	2 set stabs down	14,8*	12,1	11,2*	6,4	7,8*	4,3	5,9	2,7	3,4*	2,0	8.6
	Dozer and stabs down	14,8*	14,8*	11,2*	8,3*	7,8*	5,5*	6,1*	3,7	3,4*	2,8	8.6
-1.5 m	Rear dozer up	14,6	8,1	7,4	4,5	4,6	2,8	3,0	1,7	2,6	1,4	8.1
	Rear dozer down	18,0*	9,5	11,5*	5,1	8,2*	3,2	5,7	2,0	4,0	1,6	8.1
	2 set stabs down	18,0*	12,2	11,5*	6,3	8,2*	3,9	5,8	2,5	4,0*	2,1	8.1
	Dozer and stabs down	18,0*	16,9	11,5*	8,5	8,2*	5,3	6,1	3,5	4,0*	3,0	8.1
-3.0 m	Rear dozer up	14,3	7,8	7,1	4,2	4,3	2,5			3,0	1,7	7.3
	Rear dozer down	19,4*	9,1	11,8*	4,8	8,4*	2,8			5,2*	2,0	7.3
	2 set stabs down	19,4*	11,8	11,8*	6,0	8,4*	3,6			5,2*	2,5	7.3
	Dozer and stabs down	19,4*	17,5	11,8*	8,3	8,4*	5,0			5,2*	3,5	7.3
-4.5 m	Rear dozer up	13,9	7,5	6,7	3,8							
	Rear dozer down	19,2*	8,8	10,8*	4,4							
	2 set stabs down	19,2*	11,4	10,8*	5,6							
	Dozer and stabs down	19,2*	17,0	10,8*	7,9							

* Hydraulically limited



WX210 Series 2

STANDARD EQUIPMENT & OPTIONS

STANDARD EQUIPMENT

Hydraulic system

- Pump management system
- Electrohydraulic servo control
- Triple-pump-hydraulic system with two service pumps and separate swing pump
- Engine and pump monitoring by power limit control
- 8 selectable power stages
- Automatic power increase in DRIVE stage
- Comfortable inching control
- Powerboost system

Electric system

- Automatic battery main switch (coupled to ignition key)
- Electronic immobiliser

Engine

- Latest generation CASE Family III Tier III diesel Engine comply with current compliant with European emissions standards
- Direct injection with turbo charger and charge air cooling
- Water-cooled, low-consumption and low-exhaust compliant to EU directive
- Electric diesel filling system
- Upper- and undercarriage
- Robust, shielded arc-welded, modular chassis in box section design
- Patented disc brakes for jolt-free work
- Power Shift gear box
- Large Toolbox under the step
- Encased ball bearing slew ring with long-life lubrication
- Swing drive with low-wearing disc brake
- Independent control of blade and each stabiliser
- Automatic axle locking system
- Automatic working brake
- Travel and swing hydrostatic braking
- Centralised control of blade and stabilisers on left joystick
- Additional working lights

Driver cab

- Noise-insulated and flexibly mounted cabin in soft design

- Tinted safety glazing all around, full up and over windscreen
- Sun blinds, large roof window, transparent rain protection
- LCD with integrated error diagnosis function
- Steering column incline infinitely variable
- Ergonomic design of arm rests and foot pedals
- Driver air suspension seat individually adjustable for height and incline
- Consoles adjustable for height and length
- 12V electrical auxiliary supply in cab
- Forward/Reverse shifting on joystick
- Cab headlights

OPTIONS

Hydraulic system

- Hydraulic system for hammer, grab, shears
- Safety valves for hoist mode
Upper- and undercarriage
- 30 km/h forward speed
- Single or twin tyres
- Dozer blade with parallel guidance
- Stabilisers with large, lockable pads for secure grip on uneven ground
City stabilisers
- Transport holder for clamshell grab
- Intermediate bearing for prop shaft
- Central greasing nipple on boom
- Object handling kit with load hook
Driver cab
- Air conditioning
- Cooling box
- Radio
- FOPS guard for cab roof + front
- FOPS guard for cab roof
- Two cab lights rear

Standard and optional equipment shown can vary by country.

Worldwide Case Construction Equipment Contact Information

EUROPE/AFRICA/MIDDLE EAST:
Centre D'affaires EGB
5, Avenue Georges Bataille - BP 40401
60671 Le Plessis-Belleville - FRANCE

NORTH AMERICA/MEXICO:
700 State Street
Racine, WI 53404 U.S.A.

LATIN AMERICA:
Av. General David Sarnoff 2237
32210 - 900 Contagem - MG
Belo Horizonte BRAZIL

ASIA PACIFIC:
Unit 1 - 1 Foundation Place - Prospect
New South Wales - 2148 AUSTRALIA

CHINA:
No. 29, Industrial Premises, No. 376.
De Bao Road, Waigaoqiao Ftz, Pudong,
SHANGHAI, 200131, P.R.C.



The call is free from a land line. Check in advance with your Mobile Operator if you will be charged.

NOTE: Standard and optional fittings can vary according to the demands and specific regulations of each country. The illustrations may include optional rather than standard fittings - consult your Case dealer. Furthermore, CNH reserves the right to modify machine specifications without incurring any obligation relating to such changes.



Conforms to directive 98/37/CE

CASE Construction Equipment

CNH UK Ltd
Unit 4,
Hayfield Lane Business Park,
Field Lane, Auckland,
Doncaster,
DN9 3FL
Tel. 00800-2273-7373
Fax +44 1302 802829

www.casece.com

CASE
CONSTRUCTION